

Abra2BST

Resourceful and easy to use, Abra2BST[®] makes your data transfer seamless.

KEY FEATURES

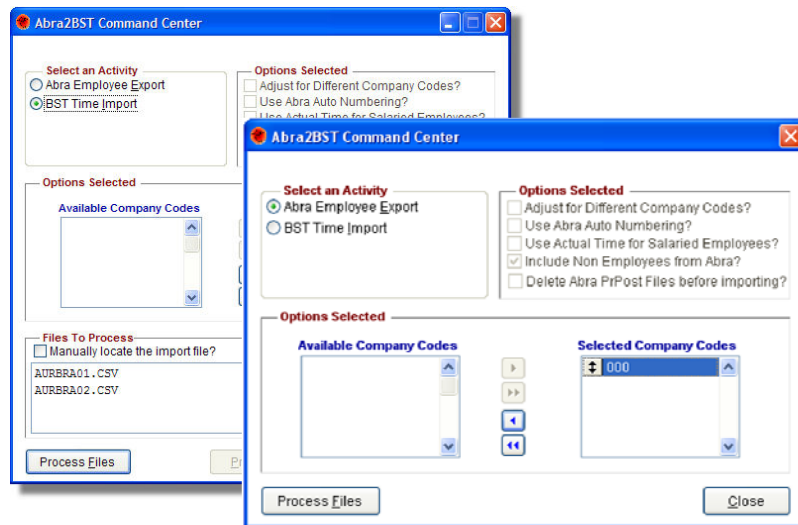
- Transfer your employee data from Abra to BST.
- Transfer your payroll data from BST to Abra Payroll.

BENEFITS

By electronically transferring your employee and pay data between Abra and BST, it saves you time by removing duplicate entry and money.

OTHER FEATURES

- Support for multi-company setup.
- Company code crosswalk.
- Overtime code flexibility.
- Take advantage of the Abra custom panel for exporting custom employee data.
- Employee number conversion capabilities.
- Flexible employee export file layout using the Visual FoxPro syntax.
- Reporting capabilities.
- Flexible Abra import capability.



The easy-to-use Abra2BST Command Center

Abra2BST allows Abra users to interface their Abra human resources and payroll data with BST Enterprise from BST Global. With its easy-to-use interface and customization, you will be able to pass your employee data, from Abra, to BST. The same interface allows you to pass your BST time data to Abra payroll.

Abra2BST can be used as a stand-alone solution or on a network, for multi-user access.

CAASPRE Consulting has relationships with BST and Sage Authorized Partners to guarantee Abra2BST will function when new versions of BST and Abra are released.

To purchase Abra2BST contact Dresser & Associates, an Authorized Abra2BST reseller.

*Effective Design, Implementation,
and Support for Your HRMS Needs*

**Toll Free: 1-886-885-7212
www.dresserassociates.com
info@dresserassociates.com**



Northeast:
243 US Route One
Scarborough, ME
04074

Florida:
2643 Gulf Bay Blvd.
Suite 1560-441
Clearwater, FL 33759

Southeast:
3535 Peachtree Road NE
Suite 520-264
Atlanta, GA 30326

About CAASPRE Consulting...



CAASPRE Consulting solves complex business issues by providing enterprise-wide solutions architecting and business strategies, database architecture, modeling and design, custom programming, Business

Process Management (BPM), report writing, Web and client-server-based application development and helping clients increase productivity by aligning their information technology infrastructure with their core business objectives.

Further, CAASPRE Consulting provides clients with answers to and diagnosis of questions and other challenges surrounding their informational needs. We provide solutions that will correct issues associated with clients' computer software, hardware and network.

Additionally, CAASPRE Consulting can help Abra users with customized solutions, systems integration and reporting.

SERVICES AVAILABLE

- Technical Support
- Installation and Setup
- Maintenance*
- Application Support

TECHNICAL SUPPORT

Technical support is available Monday through Friday
9:00 AM—5:30 PM EST
Excluding national holidays.

813.333.1661

For more information on any of our products or services please visit us on the Web at:

www.caaspreconsulting.com

Abra2BST

Minimum System Requirements

- Recommend Windows XP, Windows Vista or Windows 7 (Workstation)
- Windows Server 2000, Windows 2003 Server or Windows 2008 Server.
- Pentium processor 1 GHz or better
- 256 MB of RAM
- 50 MB of hard disk space
- Internet access for updates
- Licensed copy of Abra Suite 7.8 or greater
- **Compatible with Abra 9.0**

*Abra2BST and the Abra2BST logo are registered trademarks of CAASPRE Consulting, LLC.
Abra is a registered trademark of Sage Software.
BST is a registered trademark of BST Global.
Visual FoxPro is a registered trademark of Microsoft Corporation.*

*CAASPRE Consulting, LLC is an equal opportunity employer, m/f/v/d.
Copyright © 2005,2010 CAASPRE Consulting, LLC. All rights reserved*



PO Box 341365
Tampa, FL 33694

Phone 813.649.8250
Fax 813.265.9468